

Maintenance and Operations Tax Election 2002

“Educating
today's and tomorrow's
future”



“Improving LISD for Today and Tomorrow is
an obligation for all citizens”



Strategic Plan Statement

- Maximize resources
- and utilize sound fiscal planning
- 81% State Funds → \$109,058,514
- 15% Local Funds → \$19,867,210
- 3% Partnerships → \$3,391,046
- 1% Federal Funds → \$878,000

FYI: Lowest Tax Rate in Region and
#55 lowest among 1,000 in property values



Facts



- Average monthly payroll cost
\$9,801,507
- Cost of Health insurance for 12 months
\$9,935,289
- Cost of security costs for 12 months
\$1,112,755



Facts

- Number of professionals/administrators
312
- Number of Paraprofessionals
1,513
- Number of Teachers
1,283
- Average years of experience for teachers
13.9 years



Facts

- Average Teacher salary

Beginning Teacher	\$28,745
1-5 years experience	\$31,121
6-10 years experience	\$34,491
11-20 years experience	\$42,482
Over 20 years experience	\$48,968
- Cost of a 3% Increase to:

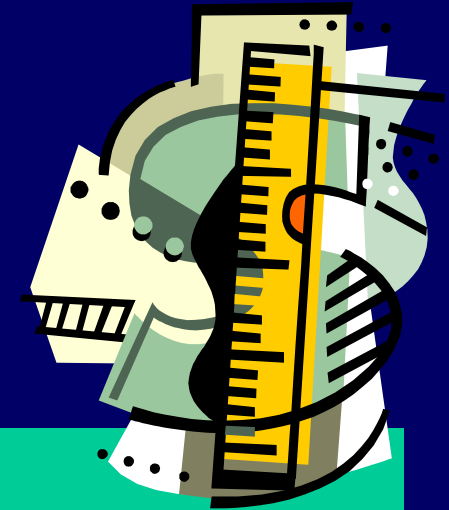
Para professionals	\$495,000
Professionals	\$282,000
- Avg. Teachers Increase \$1,439,000

Facts



- Average cost of home = \$46,874
- Amount generated by 1 cent = \$120,000
- Collection rate = 94%
- Increase in state funds for every penny of local effort = \$681,095

Goal and Objective



- GOAL: Maximize resources
- OBJECTIVE: (1) Provide adequate revenues to finance operating costs BY
- Allowing LISD to bring in more state GRANT funds at a rate of \$8 to \$1
- Allowing LISD to raise \$1 by raising the tax cap

Today's Situation



- Current rate for 2000: -----→ \$1.32
- Tax rate cap passed in 1969: ----→ \$1.35
- State Tax rate cap -----→ \$1.50
- Most District's Proposal----- → \$1.60+



How Did We Get Here?

- Before 76th Legislature: Tax rate for operations -----→ \$1.02
- After 76th Legislature: Tax rate for operations -----→ \$1.22
- .20 cent shift from the debt rate to the operations rate
- I&S collections, no longer eligible

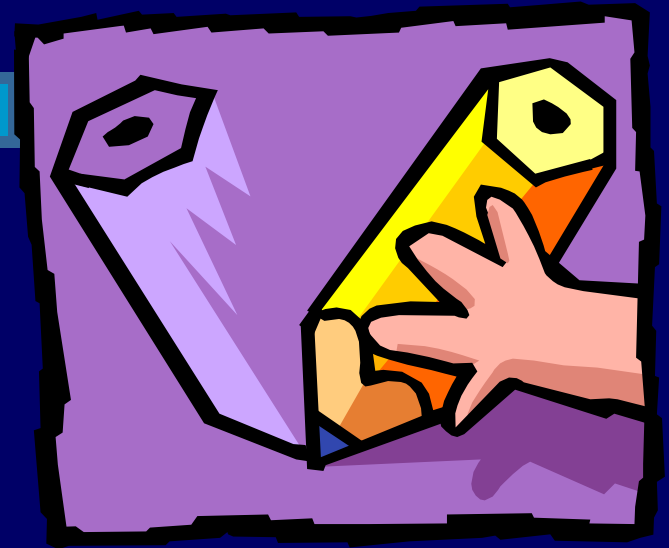


History

- Rate Cap passed in 1969 ----- → \$1.35
- Effective Tax rate in 1969 ----- → \$1.32

- Before 1978, districts taxed at 50% of value → Now 100%
- After 1986, districts must tax at least \$.86 cents before state funds
- State approved \$1.50 Tax Cap

Available Option



- Increase the tax cap to state limit \$1.50

Advantages:

- More state funds \$8 to \$1
- More local funds for teacher pay
- More local funds for inflation costs

Disadvantages:

- Less state funds
- Competition with other districts for teachers
- Less services to students

Summary



- Partnership with all taxpayers to bring in \$8 per \$1 spent by local taxes
- Tax Cap Election to \$1.50 on November
- Texas Tax Cap may also be changed
- Get involved in your school district